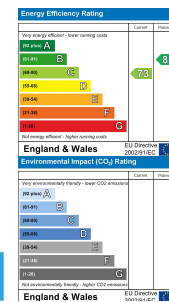


3 Kensington Gardens, Haverfordwest, Pembrokeshire, SA61 2RL

- Mid Terrace Townhouse
- En-Suite Shower Room
- Modern Kitchen/Diner And Utility Room
- Driveway Parking And Garage
- Convenient To Amenities
- Four Double Bedrooms
- Open Plan Living Accommodation
- Very Well Presented
- Low Maintenance Garden To Rear
- EPC Rating: C

£310,000

COMPUTER-LINKED OFFICES THROUGHOUT WEST WALES and Associated office in Mayfair, London



12 Victoria Place, Haverfordwest, Pembrokeshire, SA61 2LP
EMAIL: haverfordwest@westwalesproperties.co.uk

TELEPHONE: 01437 762626



12 Victoria Place, Haverfordwest, Pembrokeshire, SA61 2LP
EMAIL: haverfordwest@westwalesproperties.co.uk TELEPHONE: 01437 762626

The Agent that goes the Extra Mile





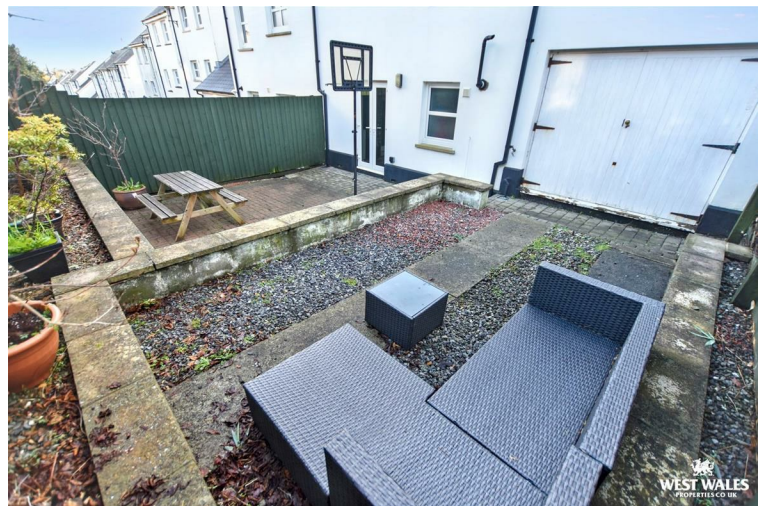
Located in a prestigious residential area of Kensington Gardens, Haverfordwest, is this beautifully presented terraced town house. Spanning over 4 floors, this property has the space to comfortably accommodate a growing family!

The layout of the property briefly comprises of an entrance hall, open plan kitchen/diner, WC and utility room on the ground floor. On the first floor is an open plan living room with adjoining study/further dining area, and a second reception room which would also be suitable as a fourth bedroom. The second floor has two bedrooms which are served by a modern family bathroom with an overhead shower. On the top floor is the master bedroom with en-suite shower room. The property is in an excellent order with neutral decoration throughout, a contemporary fitted kitchen and bathroom suites, and gas central heating.

Externally, a driveway to the front of the property provides off road parking for two cars, and access to the adjoining through-garage. French doors in the kitchen lead through to the rear garden, which is laid to paving for easy maintenance with a boundary fence.

Conveniently located for schools, college and all amenities in town, this family home must be viewed in order to fully appreciate!

The market town of Haverfordwest has numerous facilities and amenities on offer, which include a good range of shops, retail parks, primary and secondary schools, sixth form college, hospital, mainline train station, new leisure centre/swimming pool, cinema, restaurants and pubs. The beautiful Pembrokeshire coast is only 6 miles to the south-west, at the long sandy beach of Broad Haven, and the famous surfing beach of Newgale 7.5 miles to the northwest.



DIRECTIONS

From our Haverfordwest office proceed up High Street into Dew Street and bear right into Albert Street. Turn right down Barn Street and at the bottom of the hill bear left and proceed up City Road. Continue to the end of City Road and turn left into Rackhill Terrace. Take the first left into Kensington Gardens, where you will find number 3 on your left hand side. What3words ///spill.myself.smart

See our website www.westwalesproperties.co.uk in our TV channel to view our location videos about the area.